

H84 / H94 Tool Information

CONTENTS

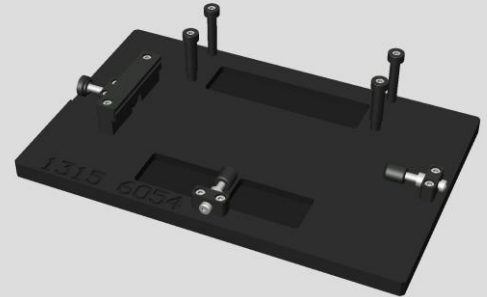
1	Tool for mechanical repair	2
1.1	New developed tools.....	2
1.2	Reused tools from previous models.....	4
1.3	Optional Tools for Pressing	7
1.4	Tool Modification	8
1.5	WRT Fixture Maintenance.....	9
2	Tool for electrical repair	10
2.1	New developed tools.....	10

1 Tool for mechanical repair

1.1 New developed tools

Positioning Tool for Panel Rear Assy (1315-6054)

For positioning the Panel Rear on the unit.



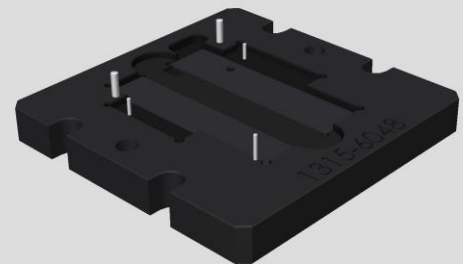
Positioning Tool for Adhesive WR Panel Rear (1315-6053)

For positioning the Adhesive WR Panel Rear on the unit.



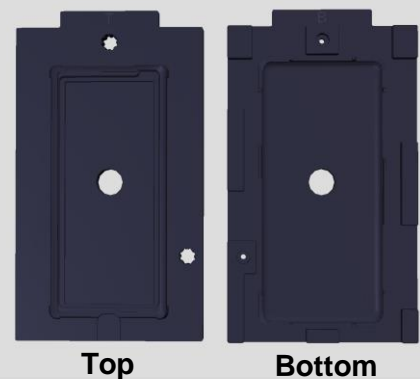
Battery Press Tool Bottom (1315-6048)

*Press Battery Inlay, and Battery Press Tool Bottom are used together for fixing the Battery on the Plate Battery.
And also Battery Press Tool Bottom is used for positioning the Antenna WLC on the Plate Battery.*



Press Rubber Inlay (1315-6046)
(Including both Top and Bottom.)

*For fixing the Panel Rear on the unit.
Place the unit on the Press Rubber Inlay Bottom, and cover by Press Rubber Inlay Top.
Press it using with Generic Wheel Press Tool, or former type of Press Tool.*



Tool for mechanical repair

Adapter for Panel Disassembly Tool (1315-6066)

For removing the Panel Rear.



WRT Fixture (1315-6061)

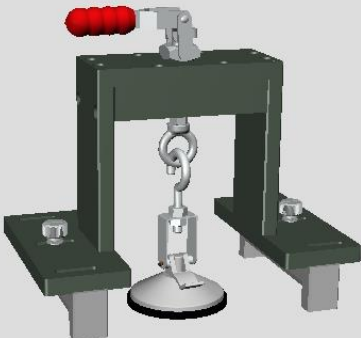
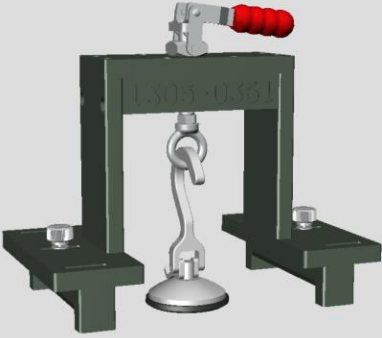

For waterproof testing.

Including Suction Pad for WRT Fixture (1313-3667).



Tool for mechanical repair

1.2 Reused tools from previous models

<p>Panel Disassembly Tool II (1313-6278)</p> <p><i>For removing the Panel Rear. Including Vacuum Cup for Tool (L) (1313-3658).</i></p>	
<p>Panel Disassembly Tool (1305-0361)</p> <p><i>For removing the Panel Rear.</i></p> <p>Note! Instead of Panel Disassembly Tool II (1313-6278), Panel Disassembly Tool (1305-0361) can be utilized. However, in order to use it, simple modification is required. Refer to the “1.3 Tool Modification” for detail.</p>	
<p>Vacuum Cup for Tool (L) (1313-3658)</p> <p><i>Maintenance part for Using with Panel Disassembly Tool II (1313-6278) and Panel Disassembly Tool (1305-0361). If you use Panel Disassembly Tool (1305-0361), must be replace with this vacuum cup.</i></p> <p>Note! Refer to the “1.3 Tool Modification” for detail.</p>	

Tool for mechanical repair

Generic Wheel Press Tool (1311-1952)

Using with Press Rubber Inlay (1313-6380) for fixing the Panel Rear on the unit.

**Note! Former type of Press Tool can be utilized for pressing instead of this tool.
Refer to the 1.2 Optional Tools for Pressing.**



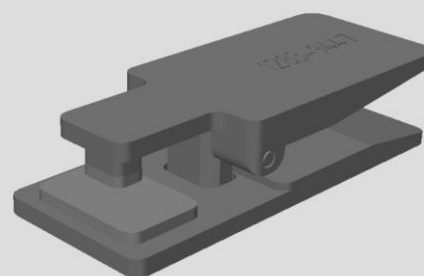
Press Battery Inlay (1313-1745)

Press Battery Inlay, and Battery Press Tool Bottom are used together for fixing the Battery on the Plate Battery.



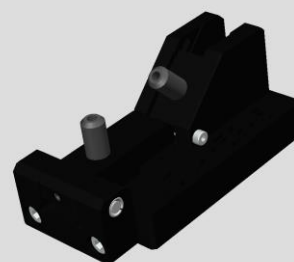
Earspeaker/Loudspeaker Top Press Tool (1283-9447)

For fixing the Loudspeaker on the unit.



Press Tool for Bending Camera FPC (1314-5945)

For bending the FPC of the Main Camera.



Tool for mechanical repair

Suction Pad for WRT Fixture (1313-3667)

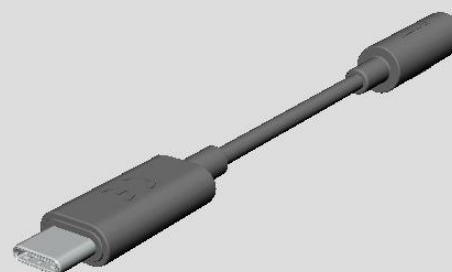
*This is maintenance part of WRT Fixture (1315-6061).
Can replace this part in case of damaged/worn out.*

*Refer to the 1.5 WRT Fixture Maintenance for replacing the
Suction Pad for WRT Fixture.*



Audio USB Conversion Cable (1310-9805)

*This model doesn't have audio jack, and this conversion
cable is required for analog audio test.
Connect the Audio USB Conversion Cable between headset
and unit (USB connector) for testing analog audio output
through USB connector.*



Wireless Charging Dock (1312-9940)

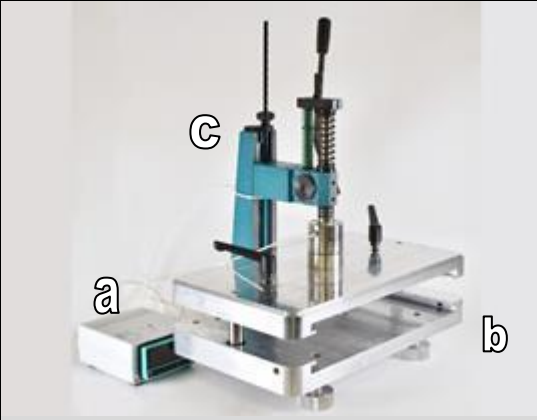
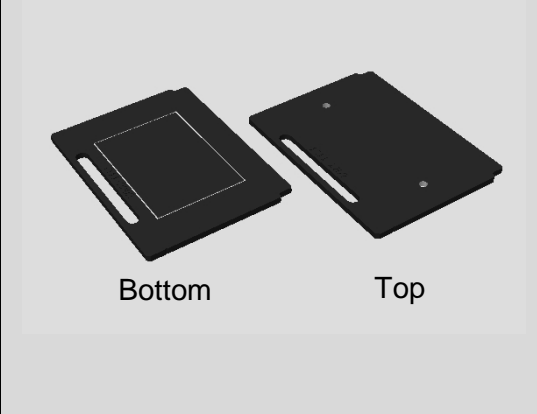
For testing wireless charging function.







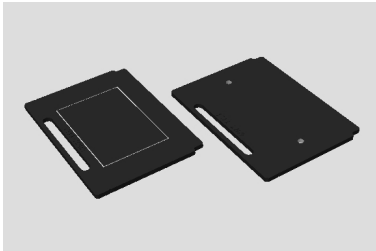
Tool for mechanical repair

1.3 Optional Tools for Pressing

The tools for pressing (fixing the Panel Rear on the unit), the following tools (former type of press tool) can be utilized instead of Generic Wheel Press Tool (1311-1952).

<p>a) Load cell measurement kit (1274-3895) b) Generic Fixture for Presstool (1273-4413) c) Toothed Rack Press (1281-2676)</p>	
<p>Inlay Adapter (1311-2202) (Including both Top and Bottom.)</p>	

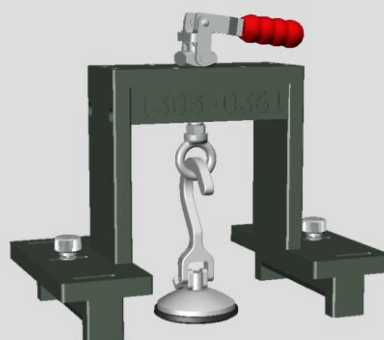
Requiring Tools matrix for Pressing (fixing the Panel Rear on the unit)

Press Tool	Press Rubber Inlay	Inlay Adapter
<p>Generic Wheel Press Tool</p>  <p>1311-1952</p>	 <p>1315-6046</p>	<p>No Required</p>
<p>Former type of Press Tool</p> 	 <p>1315-6046</p>	 <p>1311-2202</p>

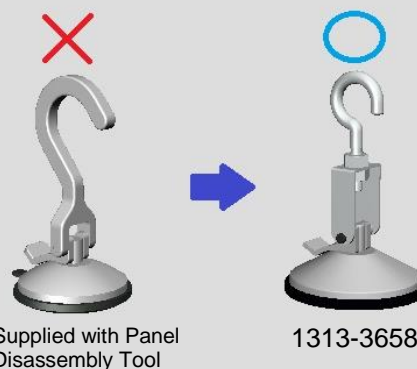
Tool for mechanical repair

1.4 Tool Modification

In order to use the Panel Disassembly Tool (1305-0361) for removing the Panel Rear of this model, simple modification is required.
Follow below instruction for modification.



The Vacuum Cup for Tool (1305-7901) is supplied with Panel Disassembly Tool.
However, it won't be used for this model.
Use the Vacuum Cup for Tool (L) (1313-3658) instead.



Tool for mechanical repair

1.5 WRT Fixture Maintenance

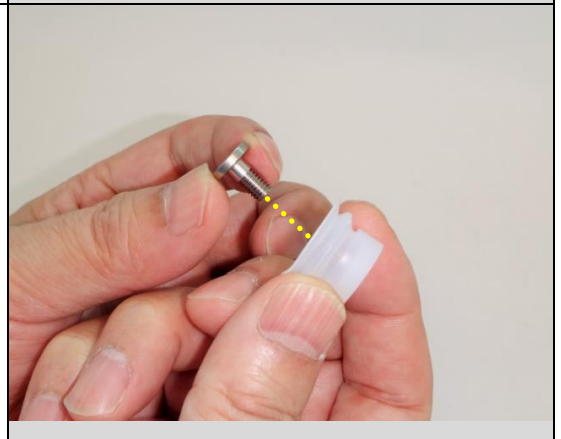
Insert the hex key wrench (3 mm) as shown in the picture, and untighten to remove the Suction Pad for WRT Fixture.



Remove the Suction Pad for WRT Fixture with screw.



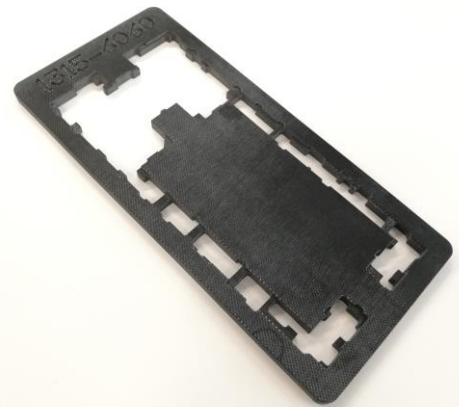
Remove the screw from Suction Pad for WRT Fixture.
And replace old pad with new pad.



2 Tool for electrical repair

2.1 New developed tools

PBA Soldering Fixture (1315-6060)



The tool can be used for both primary side and secondary side.

Primary Side

Secondary Side

